

TABLE ASSEMBLY SHOWN AS SHIPPED

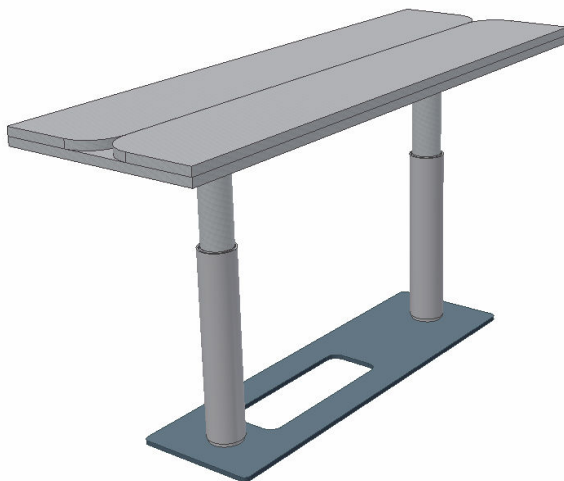


TABLE TOP NOT INCLUDED

**3537-001 CONFERENCE HI-LO
TABLE ASSEMBLY – Manual**

FEATURES

- MANUAL OPERATION
- DUAL-PEDESTAL DESIGN INCORPORATES SYNCHRONIZED MECHANICAL COLUMNS THAT PROVIDE TABLE STABILIZATION AND SMOOTH/EASY OPERATION
- PRE-ASSEMBLED FOR QUICK/EASY INSTALLATION; INSTRUCTIONS INCLUDED

RECOMMENDED LOCATION(S)

MAIN CABIN

TABLE ASSEMBLY DIMENSIONS*

EXTENDED: 26.0" H x 11.0" W (BASE) x 38.5" D (BASE)

LOWERED: 15.5" H x 11.0" W (BASE) x 38.5" D (BASE)

CENTER-TO-CENTER: 30"

* APPROXIMATE MEASUREMENT; DOES NOT INCLUDE TABLE TOP

WEIGHT*

20 LBS.

* DOES NOT INCLUDE TABLE TOP

PART NUMBER

3537-001-I

**TABLE ASSEMBLY SIZE/DIMENSIONS
CAN BE CUSTOMIZED**