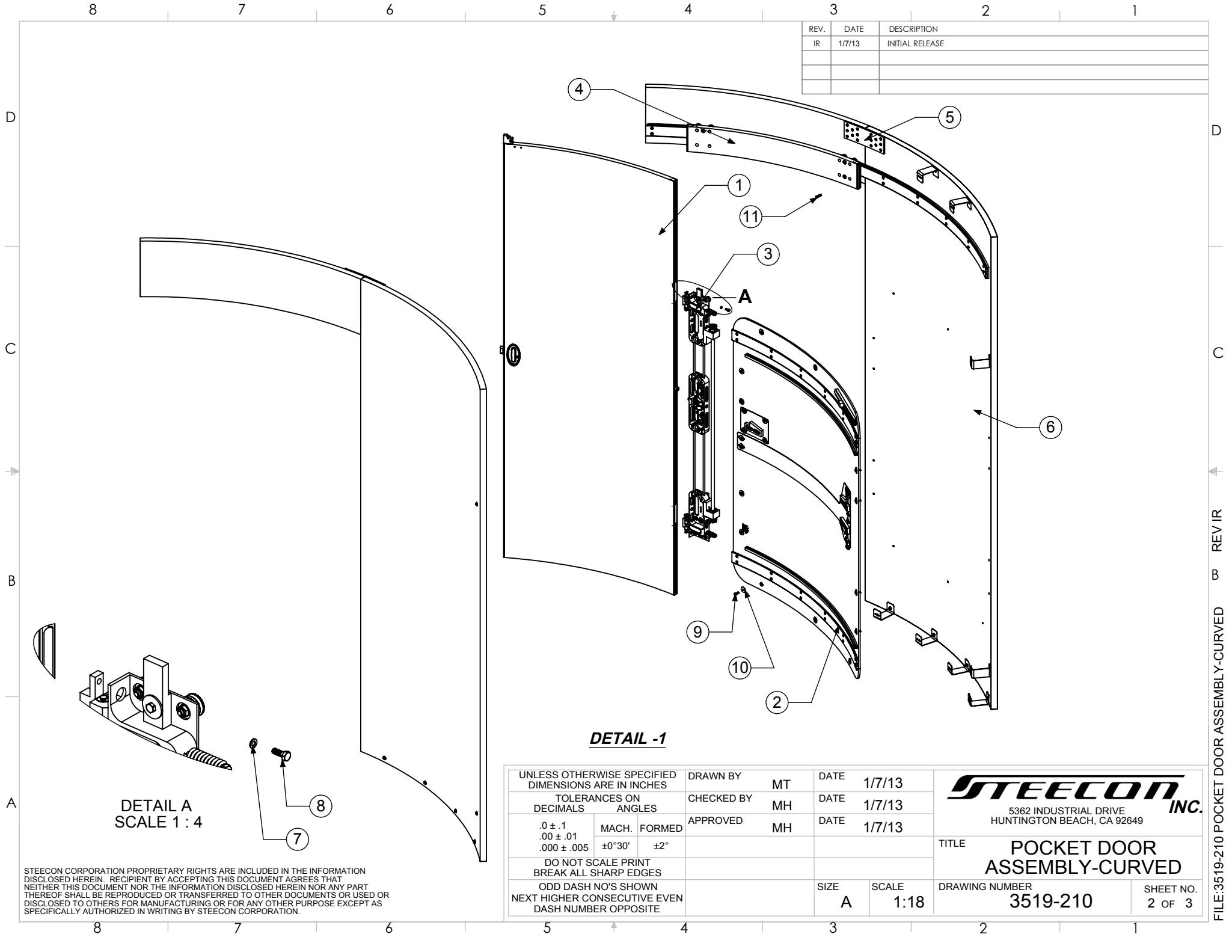


REV.	DATE	DESCRIPTION
IR	1/7/13	INITIAL RELEASE



**DETAIL -1**

DETAIL A  
SCALE 1 : 4

UNLESS OTHERWISE SPECIFIED DIMENSIONS ARE IN INCHES			DRAWN BY	MT	DATE	1/7/13
TOLERANCES ON DECIMALS			CHECKED BY	MH	DATE	1/7/13
ANGLES			APPROVED	MH	DATE	1/7/13
.0 ± .1	MACH.	FORMED				
.00 ± .01	±0°30'	±2°				
.000 ± .005						
DO NOT SCALE PRINT BREAK ALL SHARP EDGES					SIZE	A
ODD DASH NO'S SHOWN NEXT HIGHER CONSECUTIVE EVEN DASH NUMBER OPPOSITE					SCALE	1:18
					DRAWING NUMBER	
					3519-210	
					SHEET NO.	
					2 OF 3	



TITLE  
**POCKET DOOR  
ASSEMBLY-CURVED**

STEECON CORPORATION PROPRIETARY RIGHTS ARE INCLUDED IN THE INFORMATION DISCLOSED HEREIN. RECIPIENT BY ACCEPTING THIS DOCUMENT AGREES THAT NEITHER THIS DOCUMENT NOR THE INFORMATION DISCLOSED HEREIN NOR ANY PART THEREOF SHALL BE REPRODUCED OR TRANSFERRED TO OTHER DOCUMENTS OR USED OR DISCLOSED TO OTHERS FOR MANUFACTURING OR FOR ANY OTHER PURPOSE EXCEPT AS SPECIFICALLY AUTHORIZED IN WRITING BY STEECON CORPORATION.

FILE:3519-210 POCKET DOOR ASSEMBLY-CURVED REV IR